

AFRICA'S LEADER IN

**FUEL &
ENERGY**



ORCA

B-BBEE | LEVEL 2 **FUEL SOLUTIONS**

SOLUTIONS



orcafuels.co.za

ABOUT US

Level 2 BBBEE Contributor | 100% Woman Owned

Orca is Africa's leading innovative Fuel Storage, Fuel Management and Energy Solutions Company.

We are the leading manufacturers of engineered self-bunded tanks, remote refuelling systems, bulk fuel farms and plug-and-use dispensing solutions.

From diesel, petrol, lubricants and HFO, to Jet A1 and Avgas storage, Orca will design and manufacture a unique, robust and turnkey solution to meet your site requirements.

Our dedicated sales team, with the support of our in-house engineers, technicians and site teams, are at your service to design, engineer and deliver custom-developed fuel and energy solutions across the African continent.

As a proudly South African, women-owned and managed company, we pride ourselves on providing our customers with the highest quality products delivered in a timely and professional manner.

We understand the challenges of managing and storing fuel in the African environment. Our team's attention to detail throughout product design, delivery, installation and maintenance, have brought Orca to the front of the fuel storage industry with innovative solutions.

Welcome to the world of Orca.

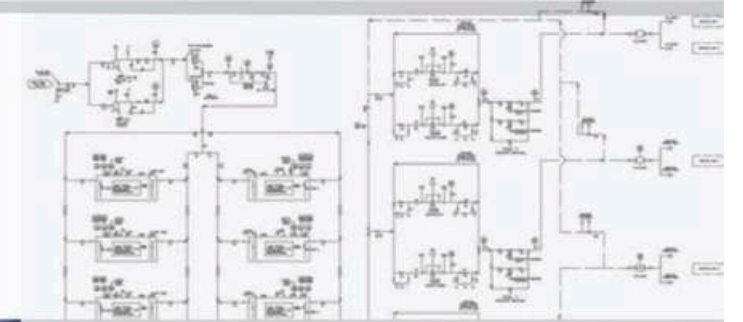


CAPABILITIES

Our quality products and professional services

Design & Engineering

Orca's in-house, specialist engineering and drafting team has the capability to prototype, develop and tailor projects prior to production.



Manufacture & Fabrication

Our dedicated factory and pump facility allows Orca Africa to serve our customers directly with no middle man between the factory and your facility.



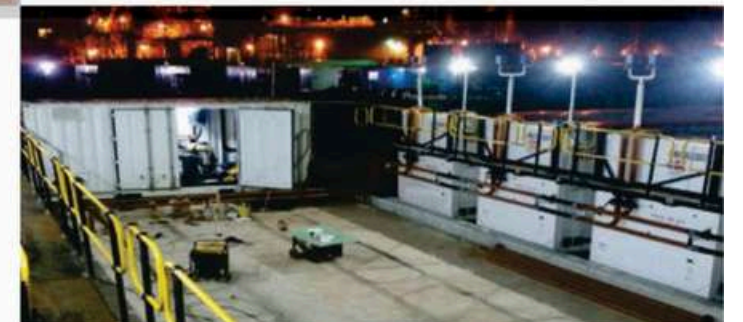
Fuel Tank Supply

Orca is an industry-leading fuel tank supplier and provider of self-bunded bulk fuel tank solutions.



Fuel Farms

We provide modular, scalable, intelligently designed self-bunded tank farms with plug-and-play refuelling and monitoring equipment.



Installations

Our installation experts offer market leading onsite installation and commissioning services.

INDUSTRIES

Servicing professional industries for over 18 years



Orca takes fuel logistics to the highest level in quality, professionalism and experience, for:

- FUEL FARMS
- ON-SITE REFUELLING
- POWER GENERATION
- PORTABLE ENERGY
- AVIATION
- FUEL MANAGEMENT
- FILTRATION



On Site Refuelling

Provides hassle-free, on site refuelling for large / small scale construction, mining and logistics equipment without the need for civil work or bund walls on site. Easy to relocate. Minimise refuelling distance and optimise operations.



Fuel Farms

Interconnecting tanks together for near unlimited capacity. Increase capacity as fuel requirement increases with 'kit-form' pipework. Easy to relocate or split tanks and fuel locations as the project requirements change.



Portable Energy

Rapid deployment for standby power, along with extended, uninterrupted running times.

ENGINEERED SOLUTIONS

Custom-built and Engineered Solutions

The experience and expertise of Orca's in-house design and engineering team are available to design your unique fuel storage and dispensing solution – optimising refuelling time and ensuring your fuel is where you need it, when you need it.



Fuel Farm

**850,000 LITRE FUEL FARM FOR DIESEL WITH
A CENTRALISED MODULAR PUMP HOUSE**

Containing all offloading and dispensing equipment



Mobile in-pit refuelling

**69,280 LITRE CAPACITY DIESEL TANK
ON A MOBILE SKID FOR MINING**

Complete with generators, generator feed equipment.
Mine specification offloading and dispensing equipment
with both inline and offline kidney filtration.



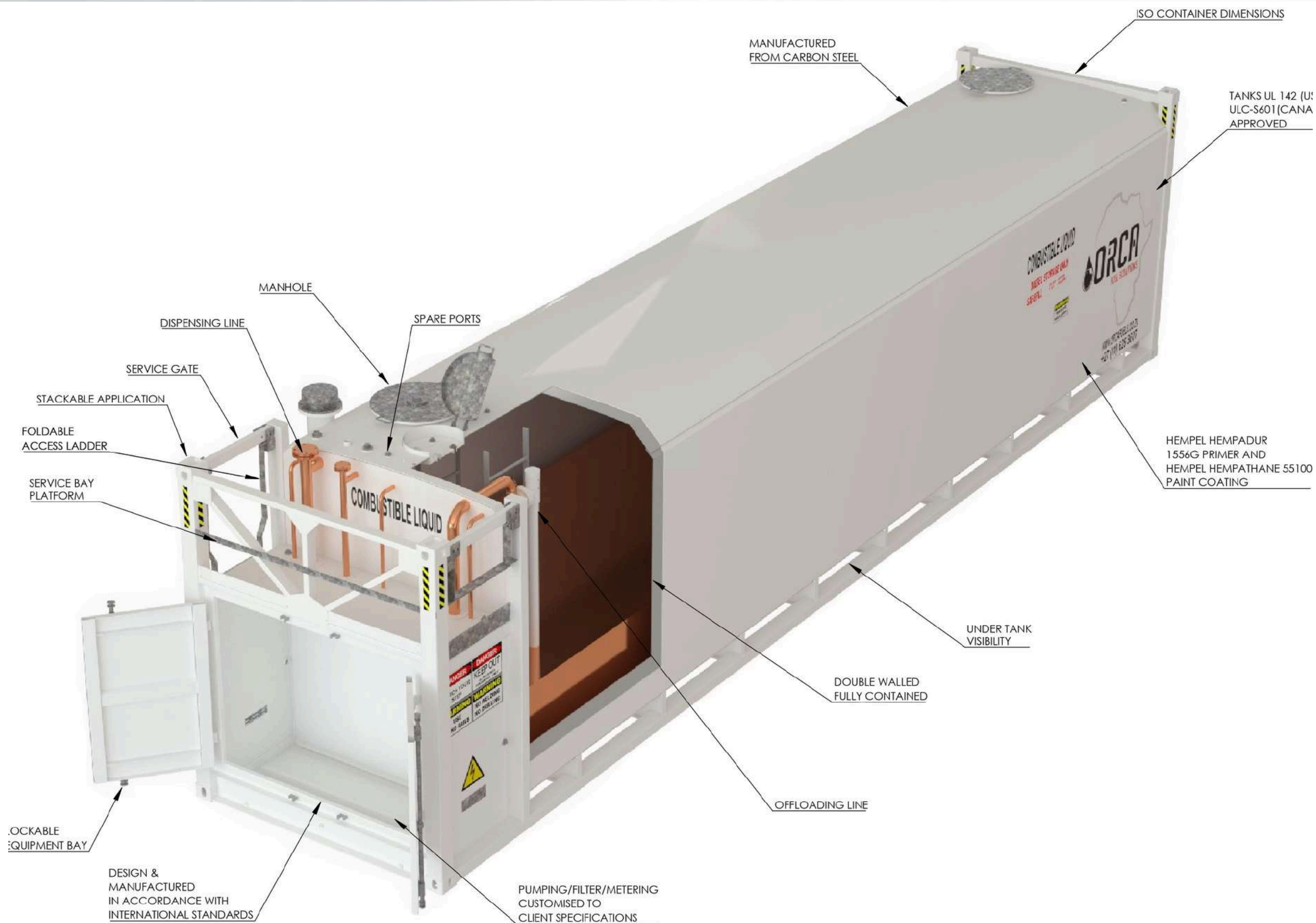
Turnkey Industrial Refuelling Solutions

69,280 LITRE CAPACITY ABOVEGROUND DIESEL TANK

Complete with mine spec offloading at 1200 l/m and dual
dispensing at 80 and 300 l/m.

TANK ARRANGEMENT

Perspective showing the Tank Arrangement



STORAGE SOLUTIONS

The benefits of an Orca storage system

Double-walled Fuel Storage Tanks (from 1,000 to 107,400 Litres)

We offer unbeatable quality and immense versatility for fast and flexible storage and dispensing solutions. Compatibility with a wide range of pumps and dispensers ensures a unique solution to suit your requirements. You won't find a safer, more reliable, or cost-efficient tank than with Orca.

Longer-lasting, Portable Storage Tanks

Our tanks last longer thanks to stainless steel fittings and an extra thick protective coating to help prevent rust and corrosion. Additionally they are designed with a Safe Fuel Limit (SFL) which is up to 10% greater than standard tanks of similar capacity. This means that each tank goes longer in between refills, giving you long term savings in labour and admin costs. This benefit is especially useful for tanks in remote locations.

Easy-to-use Fuel Tanks

It's easy to get inside an O-series for cleaning and inspection, as they come with dual manways so there is no need to disconnect the pump. Fittings have been specially positioned and designed for ease of dispensing, based on our practical experience with fuel tanks in many different situations. All Orca Africa Fuel Storage Tanks are certified to prove they comply with current health and safety regulations.

Portable for easy transport and relocation

Our storage tanks can be transported by road, rail or sea, and come in various sizes, all of which fit within a standard ISO shipping container. That makes it easy to get them on site fast, or relocate as and when refuelling needs change. Installation is easy, as our portable fuel storage tanks can be sited almost anywhere, with no requirement for concrete bund walls or construction.

Designed with your specific needs in mind

All Orca Fuel tanks are manufactured to our own specific designs in a state-of-the-art factory. This gives you the flexibility to order a tank specially adapted for your particular requirements. Please feel free to discuss your needs with us, and we'll work with you to develop and specify a tank that's exactly right for your project.

Complete Fuel Management Service

At Orca we offer turnkey refuelling solutions to make sure you get the best tank and dispensing system to match your requirements. You'll receive sound advice from experts with years of practical experience in both fuel supply and distribution.



O-SERIES

Self-bunded Bulk Fuel Storage Tanks

Orca's O-Series Tanks offer double-walled storage tanks for combustible liquids, as well as other hazardous and non-hazardous liquids, from 11,240 up to 107,400 litres.



COMPATIBILITY

D DIESEL **G** GASOLINE **L** LUBRICANTS **S** SOLVENTS

The Orca O-Series is a premium fuel storage solution designed for harsh operating environments with minimal site preparation.

Pressed corners and a reinforced top means a robust tank for your fuel storage needs. The main points in this design are a curved tank roof finish, greater capacity for safe fill and the ability to see under the tank.

O-Series tanks are constructed to international ISO container footprints for ease of transport and transfer. The standard footprints are 20, 40 or 48 foot utilising the container lock dimensions and ensures ease of transport, saving your business time and money.

O-SERIES TANKS OFFER A FAST, EASY AND CONVENIENT HYDROCARBON STORAGE SOLUTION



STANDARD FEATURES

INCOMING FUEL / PRODUCT

- 80nb Tanker fill pipework.
- Fire safe flanged ball valve, camlock adaptor & cap.
- Non return valve.
- Hydraulic overfill valve with optional unload pump.
- Internal pipe work serviceable.
- High level alarm; hazardous rated & battery powered.

OUTGOING FUEL / PRODUCT

- Anti-siphon valve (foot valve).
- Pipework terminates under walkway with ANSI flanges.
- 6" and 4" sockets in both manholes for the mounting of submersible pumps standard.
- Pump suction line including priming point plu

PUMP BAY

- Pump bay complete with water/product drain valves.
- Internal access for hoses from pylon kits.
- Pylon kits with counter weights (optional).
- Lockable bund doors with rubber dust seal.
- Access ladder to work platform mounted on left or right hand side.
- Bund ventilations.
- Front earth connection.
- Built in safety hand rail system.
- Dual 50mm side wall cavity sockets.

*Conditions apply. Some features standard, some optional extras, depending on product range. Custom colours, coatings, dimensions and refuelling equipment packages are available upon request.

Orca's tanks are designed and certified to operate in the global market



O-SERIES TANK SPECIFICATIONS

Dimensions are nominal only. Alternative capacities available upon request.

MODEL	SFL Litres (US Gallons)	CAPACITY Litres (US Gallons)	LENGTH mm (Inches)	WIDTH mm (Inches)	HEIGHT mm (Inches)	TARE kg (lbs)	PUMP BAY
O-12	11,240 (2,969)	11,839 (3,128)	2,991 (118)	2,438 (96)	2,896 (114)	4,825 (10,637)	YES
O-20 NPB	17,274 (4,663)	18,183 (4,803)	2,991 (118)	2,438 (96)	2,896 (114)	4,730 (10,429)	NO
O-30	29,350 (7,753)	30,900 (8,163)	6,058 (239)	2,438 (96)	2,896 (114)	7,705 (16,987)	YES
O-38 NPB	35,380 (9,346)	37,250 (9,840) 37,250 (9,840)	6,058 (239)	2,438 (96)	2,896 (114)	7,550 (16,645)	NO
O-55	57,930 (15,303)	60,980 (16,109)	12,192 (480)	2,438 (96)	2,591 (102)	12,570 (27,712)	YES
O-68	65,570 (17,322)	69,020 (18,233)	12,192 (480)	2,438 (96)	2,896 (114)	13,570 (29,917)	YES
O-75 NPB	71,720 (18,946)	75,490 (19,942)	12,192 (480)	2,438 (96)	2,896 (114)	13,470 (29,696)	NO
O-90 NPB	85,975 (22,711)	90,500 (23,908) (23,908)	14,630 (576)	2,438 (96)	2,896 (114)	16,460 (36,288)	NO
O-100 NPB	95,900 (25,334)	101,000 (26,681)	14,630 (576)	2,438 (96)	3,200 (126)	17,260 (38,052)	NO
O-110 NPB	107,400 (28,372)	113,100 (29,878)	14,630 (576)	2,438 (96)	3,550 (140)	19,060 (42,020)	NO

4-Hour Fire Rated protection options available on O-SERIES TANKS. Check with ORCA on specifications.

- Adblue and fuel additive products within tank design available on request. Additional bolt-on double-walled pump bays available on request.



STANDARD SPECIFICATION

- Double-walled tank designed and constructed to UL-142 and ULC-S601-14 compliance as standard.
- Supplied with all statutory signage.
- Safe fill level capacities from 11,240 litres to 107,400 litres.
- Curved tank roof finish externally.
- Unit based on ISO style 20', 40' or 48' foot cube shipping container foot print for easy lifting and transport.
- In-built tank access ladder and platform.
- Dual 2" manway tank access points.
- Updraft vent pipe.
- Calibrated aluminium anodized dipstick.
- Interstitial space monitoring point with anodized dip stick.
- Audible overfill protection alarm. -6" and 4" sockets for installation of submersible pumps
- Extra paint thickness based on 250-300 microns for extra protection in harsh climates.
- Bunded cowling and dispensing area.
- Dual hose high mast retractable units.
- Lockable doors on pump and dispensing area.
- Suitable for fuel farm configuration (master and slave).
- Transportable via tilt tray, side loader or flatbed semi-trailer.

OPTIONAL EXTRAS

Additional extras or optional add-ons can be reviewed at any time before, during or after your tank purchase to help achieve the most from your fuel equipment systems. A fuel management system or inline filtration unit can improve equipment and longevity.

O-SERIES DISPENSING OPTIONS

- AC/DC electrical or engine driven dispensing equipment
- Bowser, dispenser units or retractable hose reel systems
- Heavy and / or light vehicle refueling
- Pump electrical switch box with start / stop / e-stop station
- Flow rates from 10.5gpm to 105gpm (105+gpm on request)
- Bulk fuel dispensing unit (quick fill for onsite service trucks)
- Fuel Management System compatible
- Outdoor payment terminal compatible (EFTPOS & credit card)

FLAMMABLE STORAGE

Please check the local regulation and install relevant emergency vent for flammable storage.

CUSTOM BUILD REFUELLING PACKAGES

Please discuss your requirements, so we can create a fully-customised solution that meets your business needs.

MULTI COMPARTMENTS TANK

Orca's tanks are based on container-sized footprints for ease of transportation and handling. They can be supplied with ready-to-use pumps, reels, meters and filtration. Standard and custom build add-on compartments can be specified to hold lubricants, coolant or waste oil as required. Multi products within same tank footprint are available if required. End mounted security cabinets can be fitted including steel or roller shutter doors and internal spillage trays, to house pipe work, pumps, gauging, alarms and controls.

OST-SERIES

Self-bunded Mobile Fuel Storage Tanks

Orca's OST-Series Tanks are the best solution for the storage and dispensing of diesel, gasoline and lubricant oils – from 1,000 to 10,000 litres.



COMPATIBILITY



DIESEL



GASOLINE



LUBRICANTS



SOLVENTS

They offer a flexible solution to storing combustible liquid as well as improving fuel dispensing and management solutions. A practical design ensures a fast, easy and convenient installation in any location, indoors or outdoors.

ORCA'S OST TANKS OFFER A FAST, EASY AND CONVENIENT FUEL STORAGE SOLUTION.

These mobile and modular units ensure fast and easy transportation to site, are easily relocatable and require minimal site works or preparation required. A place-fill-and-pump installation process offering versatility and speed on commissioning.

The freestanding design allows for 360° tank viewing and inspection. High-grade paint finish ensures longer durability in the elements.

SELF-BUNDED CONTAINMENT FOR ADDED SAFETY AND SECURITY.

Our self-bunded tanks are designed as integral secondary containment and therefore do not require independent bunds for leak containment. Self-bunded tank = SFL primary tank + interstitial space + secondary external tank.

STANDARD FEATURES

- Meets UL-142, ULC-S601-14 and UN-31-A/Y compliance as standard (UN-31-A/Y covers OST-1000 to OST-6000 only).
- Self-bunded tank construction consists of a 5mm primary steel tank and a 3mm secondary steel tank (5mm secondary tank on the OST-10000 model).
- Baffled internally to reduce product movement should the unit be moved with contents.*
- Accessible and removable tank manway for internal tank maintenance and cleaning.
- Recessed spill box/pump cabinet with pump mounting bracket. All housed under heavy duty lockable lid for additional fuel security.
- Sectional cut-outs on sides of spill box to allow flexible hoses or pipework to external requirements (i.e: generators).
- Curved roof feature for water drainage to top of tank.*
- Complete with aluminium gauged dipsticks, 1 x galvanized updraft vent breather system and multiple port fittings.
- Air pressure tested prior to leaving our factory.
- Mobile and modular design allows for ease of transportation.
- 250-300 Micron thickness 'WHITE' paint finish as standard. Other colour options are available upon request.
- Flammable and combustible liquid safety labels and decals supplied as standard.
- Forklift pockets and certified tie down/lifting points at each corner.

*Conditions apply. Some features standard, some optional extras, depending on product range. Custom colours, coatings, dimensions and refuelling equipment packages are available upon request.

tanks are designed and certified to operate in the global market



OST-SERIES TANK SPECIFICATIONS

Dimensions and volumes are nominal only. Alternative capacities available upon request.

MODEL	SFL Litres (US Gallons)	CAPACITY Litres (US Gallons)	LENGTH mm (Inches)	WIDTH mm (Inches)	HEIGHT mm (Inches)	TARE kg (LBS)	BAFFLE
OST-1000	1,000 (264)	1,160 (306)	1,100 (43)	1,864 (73)	1,309 (52)	870 (1,918)	YES
OST-2000	1,890 (500)	2,000 (528)	2,274 (90)	1,394 (55)	1,309 (52)	1,090 (2,403)	YES
OST-2500	2,500 (660)	2,684 (709)	2,274 (90)	1,674 (66)	1,309 (52)	1,280 (2,822)	YES
OST-4500	4,500 (1,189)	4,800 (1,268)	2,774 (109)	2,274 (90)	1,309 (52)	1,790 (3,946)	YES
OST-6000	6,000 (1,585)	6,200 (1,638)	3,574 (141)	2,274 (90)	1,309 (52)	2,180 (4,806)	YES
OST-10000	10,000 (2,642)	11,000 (2,906)	6,058 (239)	2,438 (96)	1,295 (51)	4,000 (8,818)	YES



Tank Manway:
Recessed Spill Box Area
**Layout may change with product evolution.*

4-Hour Fire Rated protection options available on OST-SERIES TANKS. Check with Orca on specifications.

The storage of flammable liquids can be accommodated with the relevant venting and accessory change. Remember to check with local authorities. Dimensions are nominal only. Alternative capacities available upon request.

MANWAY (INSIDE LID)

- 1 x 2" Fill Point
- 1 x 2" Dip Point
- 3 x 2" Suction Ports (BSP & NPT)
- 2 x 2" Return Ports (BSP & NPT)
- 2 x 1" Suction Ports (BSP & NPT)
- 2 x 1" Return Ports (BSP & NPT)

MOBILE AND MODULAR

- OST-1000 to OST-6000: Forklift pockets, certified tie down/lifting points at each corner.
- OST-10000: ISO corner castings and skid tray base for tilt tray or swing lift loading.
- Tanks can be stacked 4 high empty, 2 high full.

EXTERIOR OF TANK

- 1 x 2" Interstitial Dip/Vent
- 1 x 2" Suction Port (BSP)
- 1 x 2" Spare Port
- 2 x 4" Submersible Pump Provision (BSP & NPT)
- 1 x 2" Free Vent Port

FUEL MANAGEMENT

Customised Systems based on Client needs

From basic Automatic Tank Gauging (ATG) to complete Fuel Management Systems (FMS)

AUTOMATIC TANK GAUGING (ATG)



ORCA SMART TRACK-X

Automatic Tank-level Gauging by ORCA & Trackalytix

- 24/7 precise automated remote tank level monitoring
- Seamless API integration
- Connects to cloud via 4G & satellite
- Installs in 10 minutes
- Realtime customisable dashboard accessible from any device
- Increased efficiency & profitability



Cloud-based Technology

Reports and Data Automatically available via a web browser... anywhere, anytime.



partnering with
Trackalytix
MCS
Veridapt
Smartfill

- Custom-designed solutions
- Automated fuel delivery & control
- Hi-tech systems
- Leading-edge technology
- Robust
- Trusted brands
- Instant control

FUEL MANAGEMENT SYSTEMS (FMS)



ORCA SMART MCS LITE

Cost-effective Fuel & Fleet Management

- Track fuel by vehicle / driver
- Multi Pump System
- Secure contactless technology to track every litre
- Live updates of stock at multiple sites on a single platform



ORCA SMART VERIDAPT

Advanced Fuel & Fleet Management

- Realtime, unprecedented visibility & reconciliation of fuel data
- Modular design for rapid installation
- Monitor up to 16 tanks and 8 pump units
- Record unlimited transactions
- Fleet, asset & cost efficiency through vehicle/driver tracking & stock reporting
- Optimal security
- Accurate emissions monitoring & reporting
- Tax compliance reporting & rebate maximisation



ORCA SMART SMARTFILL

Robust Fuel & Fleet Management

- Cloud-based technology with multiple connectivity options
- Plug & play modules for easy setup
- Manage transactions between drivers, Fleets, Tanks and fuel deliveries
- Realtime transaction / data availability without special software
- Track & restrict usage by volume per vehicle/driver
- Monitor up to 8 pumps

PUMP PACKAGES

The Smartest Delivery and Filtration to suite your needs

LOADERS

TANKER-TO-TANKER LOADING

- Flow rates ranging from 300 L/pm to 1200 L/pm.
- Wide range of filtration and metering options.



REFUELLERS

MEDIUM AND INDUSTRIAL REFUELLING

- Flow rates ranging from 80 L/pm to 450 L/pm
- Medium and heavy vehicle refuelling.



LUBRICANTS

LUBRICATION SOLUTIONS

- Flow rates ranging from 44 L/pm to 105 L/pm.
- Includes hose reel with 10m hose and nozzle.



GENERATOR FEEDS

LOCAL AND INDUSTRIAL GENERATOR FEED

- Flow rates ranging from 32 L/pm to 110 L/pm.
- Manual and automated options.



HOME-BASE REFUELLING

LIGHT AND MEDIUM VEHICLE REFUELLING

- Flow rates ranging from 40 L/pm to 130 L/pm.
- Refuel more than one product at a time.



AVIATION

AIRCRAFT REFUELLING (Jig Compliant)

- Flow rates ranging from 80 L/pm to 500+ L/pm
- Available as diesel- or electrically-driven.

CERTIFICATIONS

Designed and certified to operate on a global scale

Orca's tanks and products are designed and certified to give you absolute peace-of-mind, whether operating in your own country, or abroad.



ULC-S601-14

ULC-S601-14: The Canadian acceptable standard for shop fabricated steel aboveground tanks for flammable and combustible liquids.



NFPA: National Fire Protection Association: Flammable and combustible liquids code applicable in the USA.

AS1940

AS 1940: Australian standard for the storage and handling of flammable and combustible liquids.



UL142

UL: The USA / NA Recognized Standard for Safety: steel aboveground tanks for flammable and combustible liquids.



Transport Canada

TRANSPORT CANADA: Department responsible to serve the public interest for developing regulations, policies, programs and services to promote safe, secure, efficient and environmentally responsible transportation in Canada.

AS1692

AS 1692: Australian standard for steel tanks for flammable and combustible liquids.

VLAREM II

VLAREM II: Flemish environmental regulation; Chapter 5.1 for oil or petroleum products.



UN-31-A/Y

UN IBC 31 A/Y: The United Nations approved international standard on design, manufacture and use of intermediate bulk containers for the transportation of dangerous goods. The UN IBC 31A/Y is applicable to the use of specially fabricated steel tanks that allows the legal transport of dangerous goods by road, rail and sea, packaging groups II & III.



UN IMDG: Carriage of dangerous goods by sea is regulated in order reasonably to prevent injury to persons or damage to ships and their cargoes. Carriage of marine pollutants is primarily regulated to prevent harm to the marine environment. The objective of the IMDG code is to enhance the safe carriage of dangerous goods while facilitating the free unrestricted movement of such goods.

PROJECTS

Recent Projects and Installations by Orca



Compact Fuel Stations

PROJECTS

Recent Projects and Installations by Orca



Mine Inpit Refuelling



Fuel Management



Dual Function: Power Generation and Light Vehicle Refuelling



Pump House

PROJECTS

Recent Projects and Installations by Orca



Lubricant Skids



Fuel Farm



Genfeed System



Mine Diesel Refuel Installation

THE ORCA TEAM

Level 2 BBBEE Contributor | 100% Woman Owned

Our people are the foundation of our business. Our dedication to providing a customised fuel solution requires that we have a team of individuals that are ready to meet every challenge.

With combined experience of over a hundred years in the tank and pump sector in Africa, we know what it takes to build strong and reliable solutions for our clients.



Welcome to **Orca**

OUR CLIENTS

We've serviced clients throughout Africa, and beyond...

Africa's leader in **FUEL STORAGE SOLUTIONS**
and **INNOVATIVE FUEL MANAGEMENT**



Ask **Orca** about...

- ABOVEGROUND TANKS
- TRANSPORTABLE TANKS
- STATIONARY TANKS
- AVIATION FUEL TANKS
- FUEL MANAGEMENT
- FUEL TRAILERS
- GREASE BINS
- FUEL FARMS
- IN-PIT REFUELLING
- REFUELLING SKIDS
- FILTRATION SKIDS
- ENERGY SOLUTIONS

CONTACT US TODAY FOR YOUR TURNKEY FUEL & ENERGY SOLUTION

Office: +27 (0)11 626 3607 | **WhatsApp:** +27 (0)60 967 7382

E-mail: info@orcafuels.co.za

Visit www.orcafuels.co.za for more information.



GET SOCIAL [in](https://www.linkedin.com/company/orca-fuel-solutions) orca-fuel-solutions [f](https://www.facebook.com/OrcaFuelSolutions) Orca Fuel Solutions [@](https://www.instagram.com/OrcaFuels) OrcaFuels [@](https://twitter.com/OrcaFuel)OrcaFuel [▶](https://www.youtube.com/OrcaFuelSolutions) Orca Fuel Solutions